

Dear Parents/Carers,

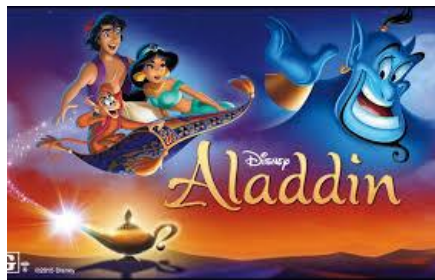
The PPPS School Concert is coming up very quickly and the year 1 students are hard at work practising to bring you their best performances!

The year 1 teachers and Ms Keating have been busy creating and organising various costumes for the year 1s to wear. However, we need you to supply some items for the performance. All of the children know which item they are performing in. Below is a list of what your child will need to bring to school prior to the performance. Please note all students will be performing barefoot.

Aladdin

Boys: white t-shirt

Girls: white t-shirt



Annie

Boys: Dull/ faded long sleeve pyjamas OR dull coloured long sleeve top and dull coloured pants or shorts

Girls: Dull/ faded long sleeve pyjamas OR nightie OR dull coloured long sleeve top and dull coloured pants or skirt



Mary Poppins

Boys: Olden days attire e.g. suit, shirt and slacks, suit jacket /vest/ braces

Girls: Olden days attire e.g. old fashioned dress OR white button up shirt and long black, white or navy skirt



Please send your child's items in by **Friday the 8th of September** in a plastic bag with their name and home group marked on it.

If you have any questions please speak to your child's teacher.

Thanks,

Year 1 Team